



Portland Public Schools

Ida B. Wells High School Modernization



Design Advisory Group Meeting #9
January 21, 2026



DESIGN TEAM HERE TODAY



Donna Bezio
PPS



Rolando Aquilizan
PPS



TJ Hopkins
Procedeo



Leilani Carr
Procedeo



Amelie Reynaud
Bora



Becca Cavell
Bora



Kim Nichols
Bora



Alexis Richbart
Bora / Access



Chelsea McCann
Walker Macy



Will Morales
Walker Macy



Rhonda Teeny
After Bruce



Thy Daniels
After Bruce

AGENDA

Welcome and Introduction 00:05

Community Agreements 00:02

DAG 8 Recap, Where we are Now 00:05

Building Design Updates 00:15

Facade Material Feedback Activity 00:15

Site Design and Circulation 00:10

Campus Arrival Activity and Share Out 00:30

Questions and Next Steps 00:05

meeting notes from
DAG #8 are posted
on the PPS Bond
website!

Community Agreements



COMMUNITY AGREEMENTS

- 1. We embrace student-first thinking.**
- 2. We approach conversations with curiosity and question our assumptions, understanding that multiple solutions or approaches can exist at the same time and all be true.**
- 3. We assume positive intent and respect one another through our words and actions.**
- 4. We understand that we all can't get what we want.**
- 5. We encourage a variety of voices in our process, and make space for different communication styles and preferences.**

DAG 8 Recap, Where we are Now



DAG 8 RECAP (DECEMBER 2025)

Building Design Updates

- Floor plan updates
- Building exterior design development
- Student commons design development

Site Design Updates

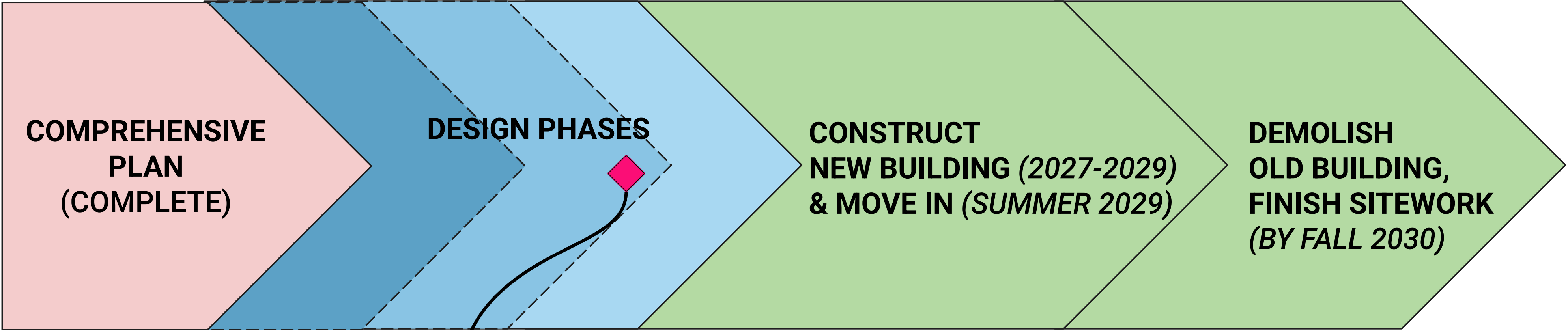
- Site plan updates
- Site circulation diagrams
- Main entry plaza design development
- Student courtyard design development

Break-out Activity and Group Discussion

- Requests for more information on fences and gates
- Questions about after-hours events and arrival
- Positive general feedback about design direction



PROJECT SCHEDULE



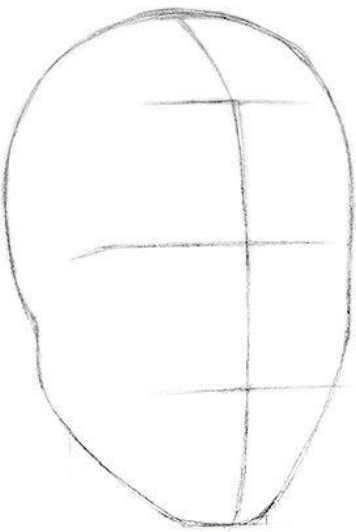
◆ WE ARE HERE, NEAR THE END OF DESIGN DEVELOPMENT

DESIGN PHASES:

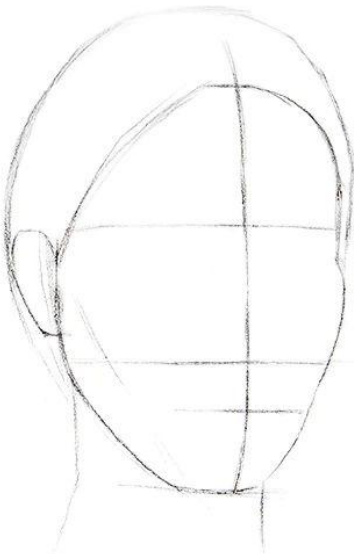
- Schematic Design, complete Fall 2025
- Design Development, complete Spring 2026
- Construction Documents, complete Fall 2026

PROJECT TIMELINE

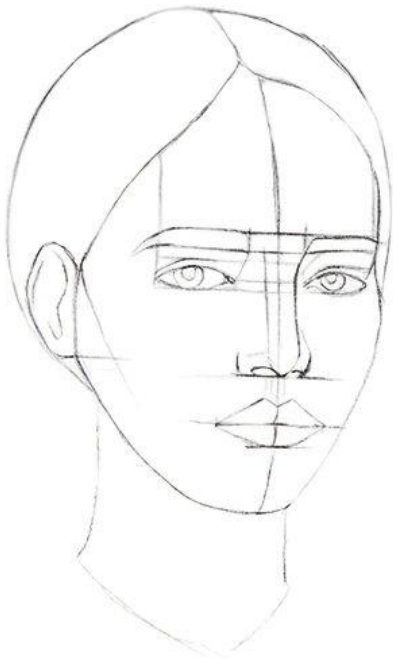
2019
Comprehensive
Master Plan



2023-25
Comprehensive
Planning

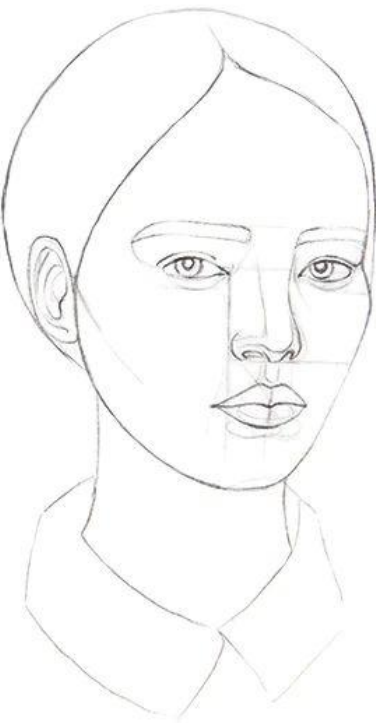


Schematic
Design



**We are
here!**

**Design
Development**



2026
Permit
Documents



2027-2030
Ready for
Construction!



**TYPICALLY
18-24 MONTHS**

**TYPICALLY
24-36
MONTHS**

Building Design Updates

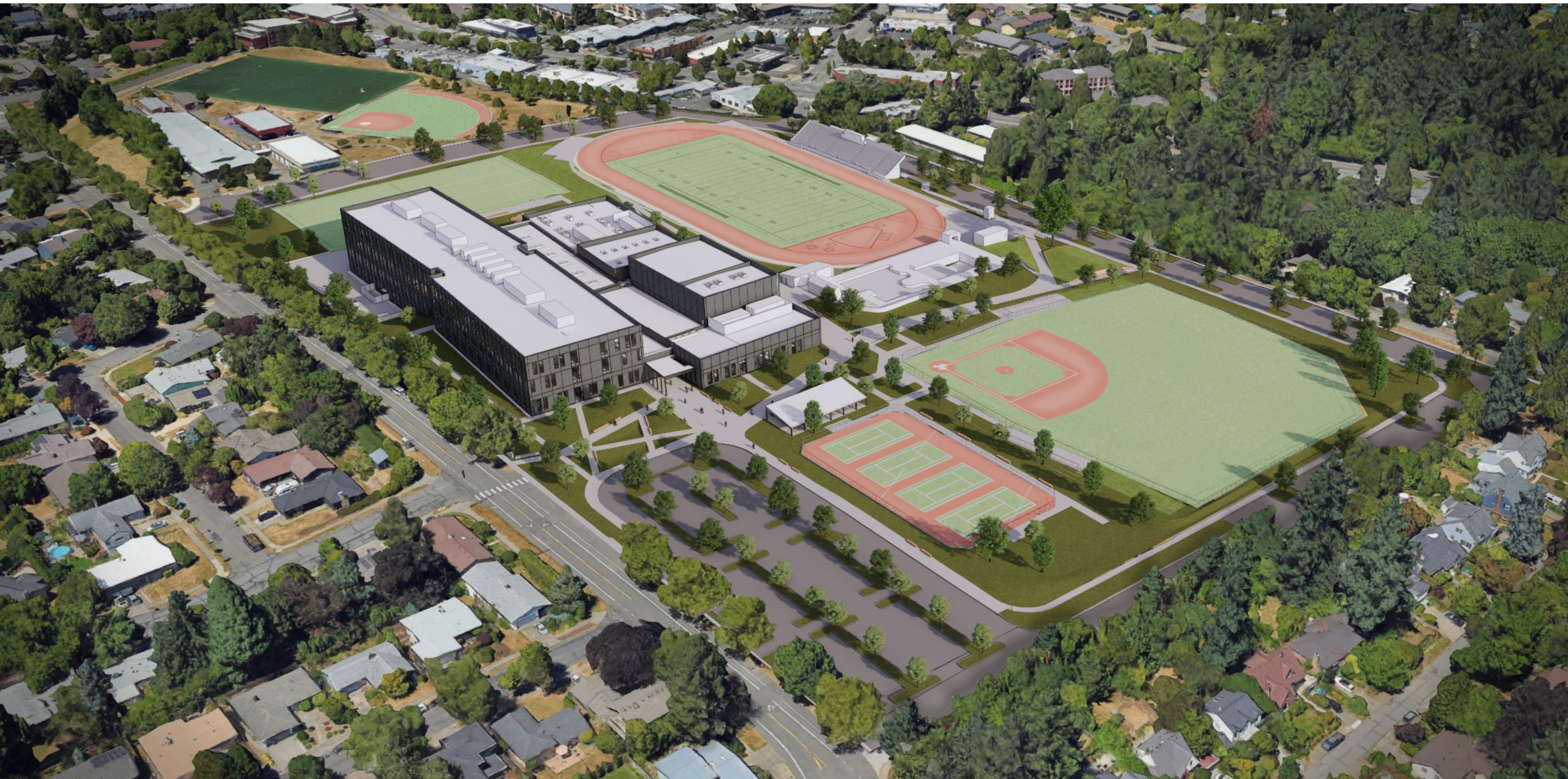


PROJECT VISION



The new Ida B. Wells High School will embody the legacy of its namesake, shining a light on her commitment to truth, transparency, and justice.

BUILDING MASSING



BUILDING CROSS SECTION



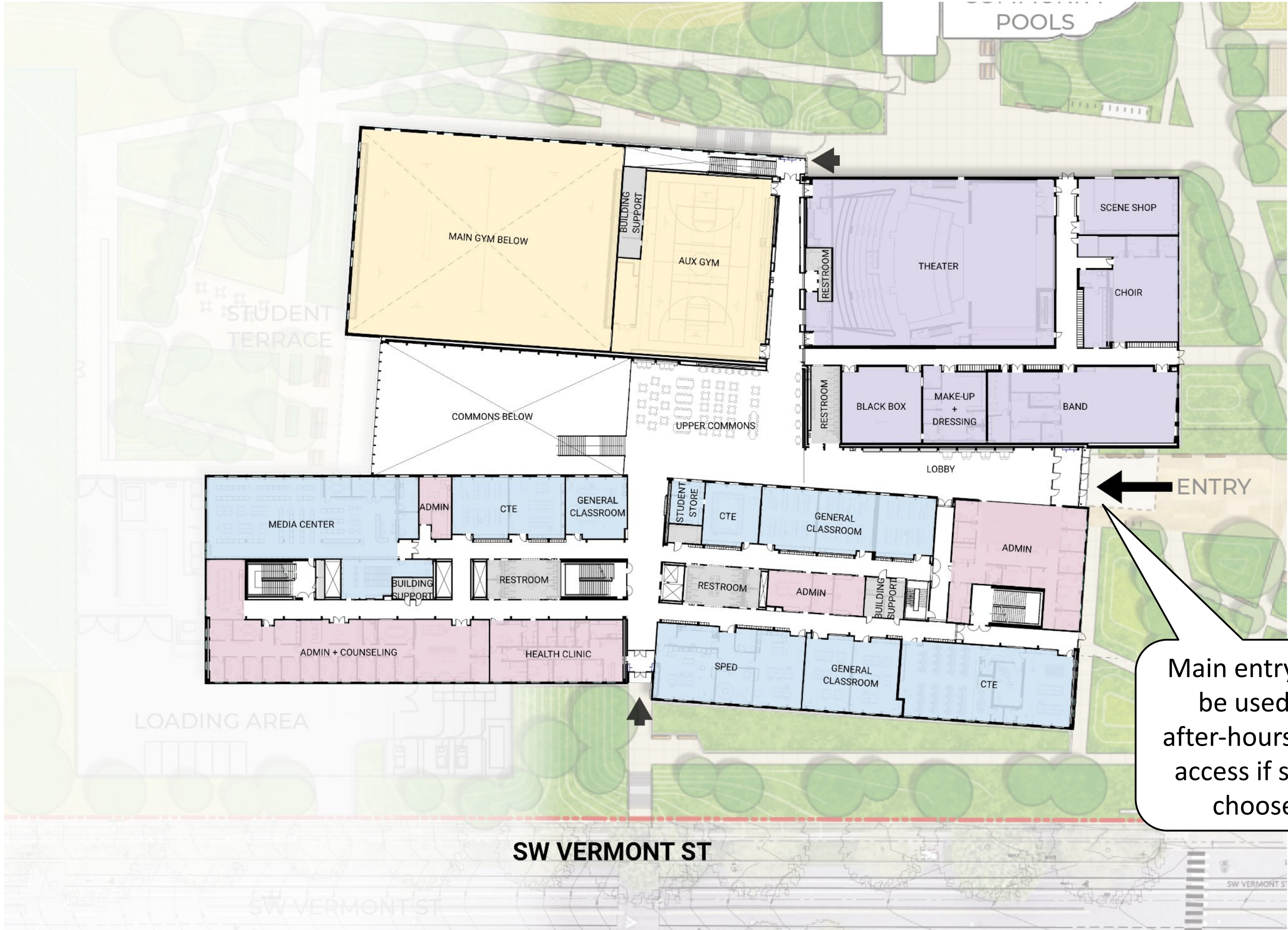
BUILDING RENDERING - VIEW FROM SOUTHEAST



BUILDING RENDERING - VIEW FROM NORTHWEST



LEVEL 1 FLOOR PLAN (MAIN ENTRANCE LEVEL)



- KEY:
- Performing Arts
 - Athletics
 - Admin & Partners
 - Academics
 - Building support



MAIN ENTRY



Views from the entry
all the way through
the building!

Building color and
texture inspired by
the trees on the
site, blending with
the landscape

Entry plaza and canopy
provides welcoming and
safe space for students

UPPER COMMONS LOOKING WEST



STUDENT COURTYARD

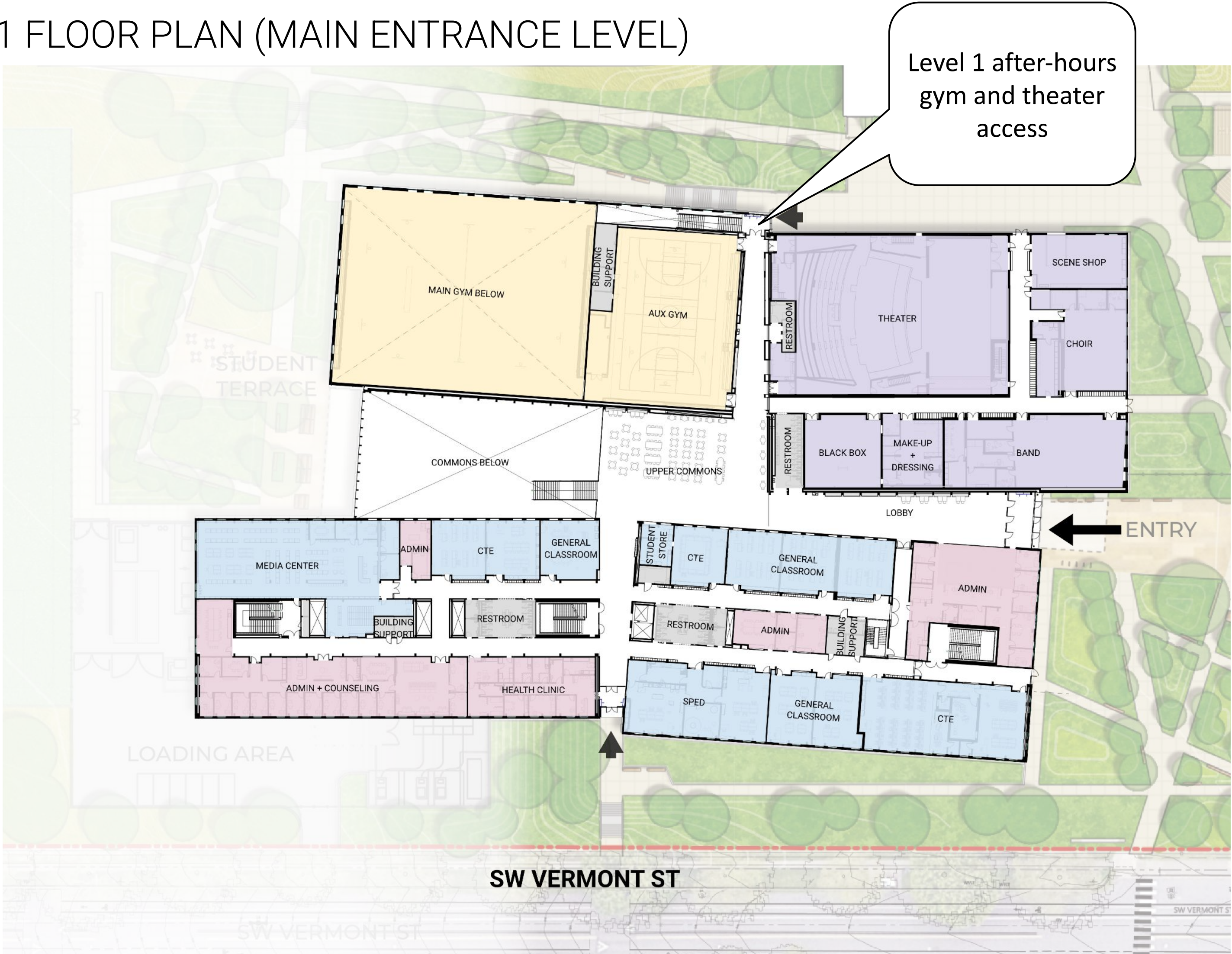


Interior views offer glimpses of activity in the commons

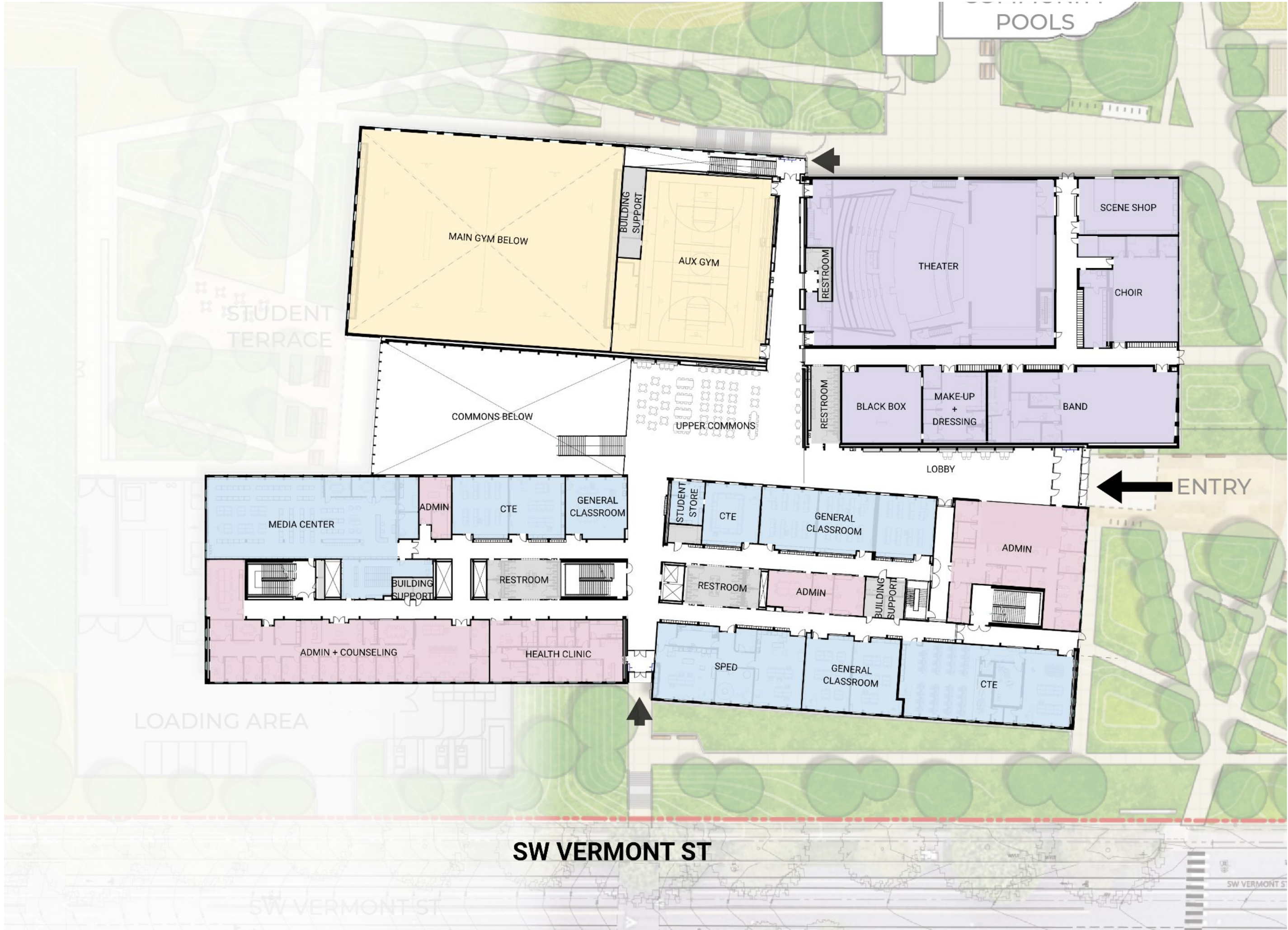
Secured courtyard for outdoor eating and gathering

Shared patio connects to campus and views

LEVEL 1 FLOOR PLAN (MAIN ENTRANCE LEVEL)



LEVEL 1 FLOOR PLAN (MAIN ENTRANCE LEVEL)

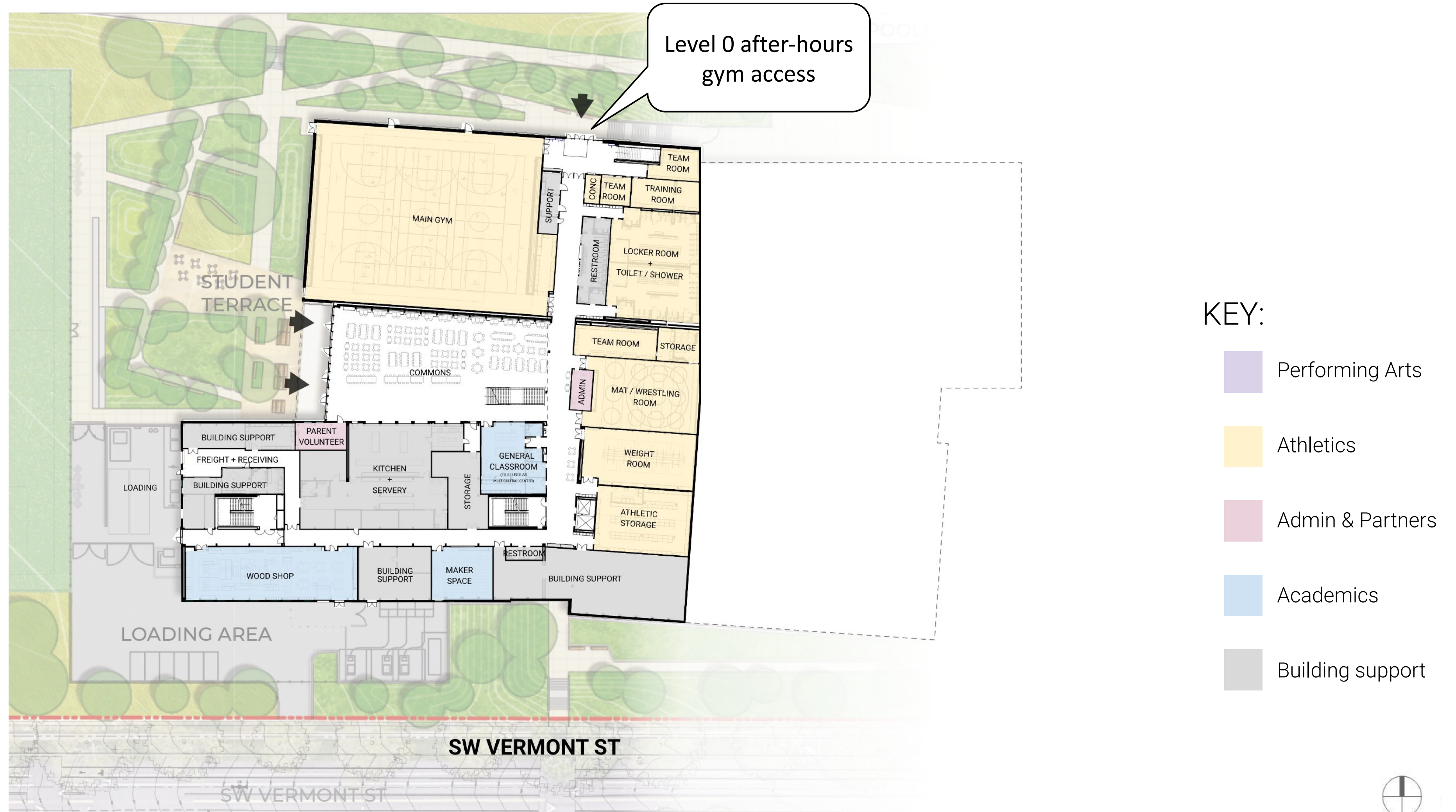


KEY:

- Performing Arts
- Athletics
- Admin & Partners
- Academics
- Building support



LEVEL 0 FLOOR PLAN



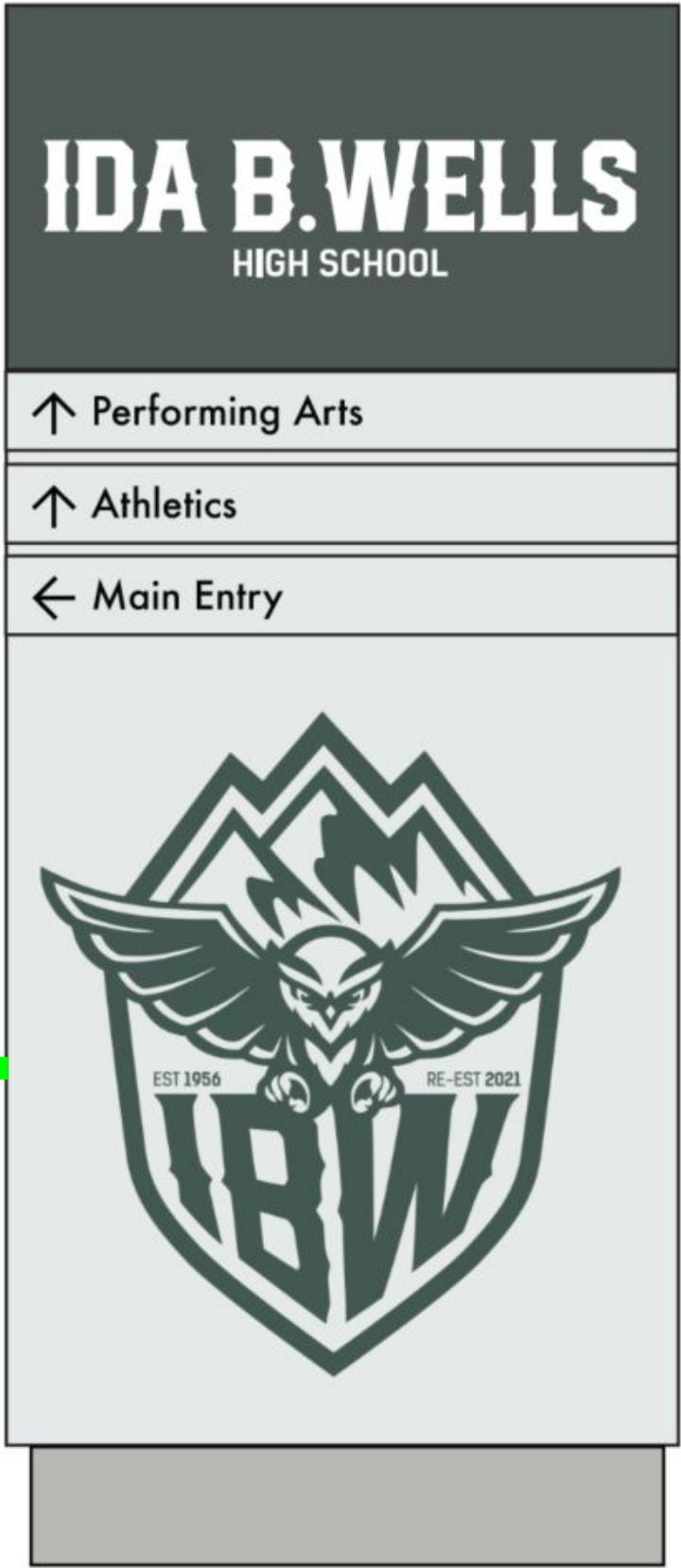
VIEW FROM PEDESTRIAN PATH LOOKING SOUTH



VIEW OF AFTER HOURS GYM & THEATER ENTRANCE



VIEW OF AFTER HOURS GYM & THEATER ENTRANCE



VIEW OF AFTER HOURS GYM & THEATER ENTRANCE



THEATER & AUXILIARY GYM CORRIDOR



THEATER



AUXILIARY GYM



LOWER LEVEL ATHLETICS ENTRY



MAIN GYM



MAIN GYM



LEVEL 2 FLOOR PLAN



- KEY:
- Performing Arts
 - Athletics
 - Admin & Partners
 - Academics
 - Building support




LEVEL 3 FLOOR PLAN



- KEY:
- Performing Arts
 - Athletics
 - Admin & Partners
 - Academics
 - Building support



DESIGN CONCEPT

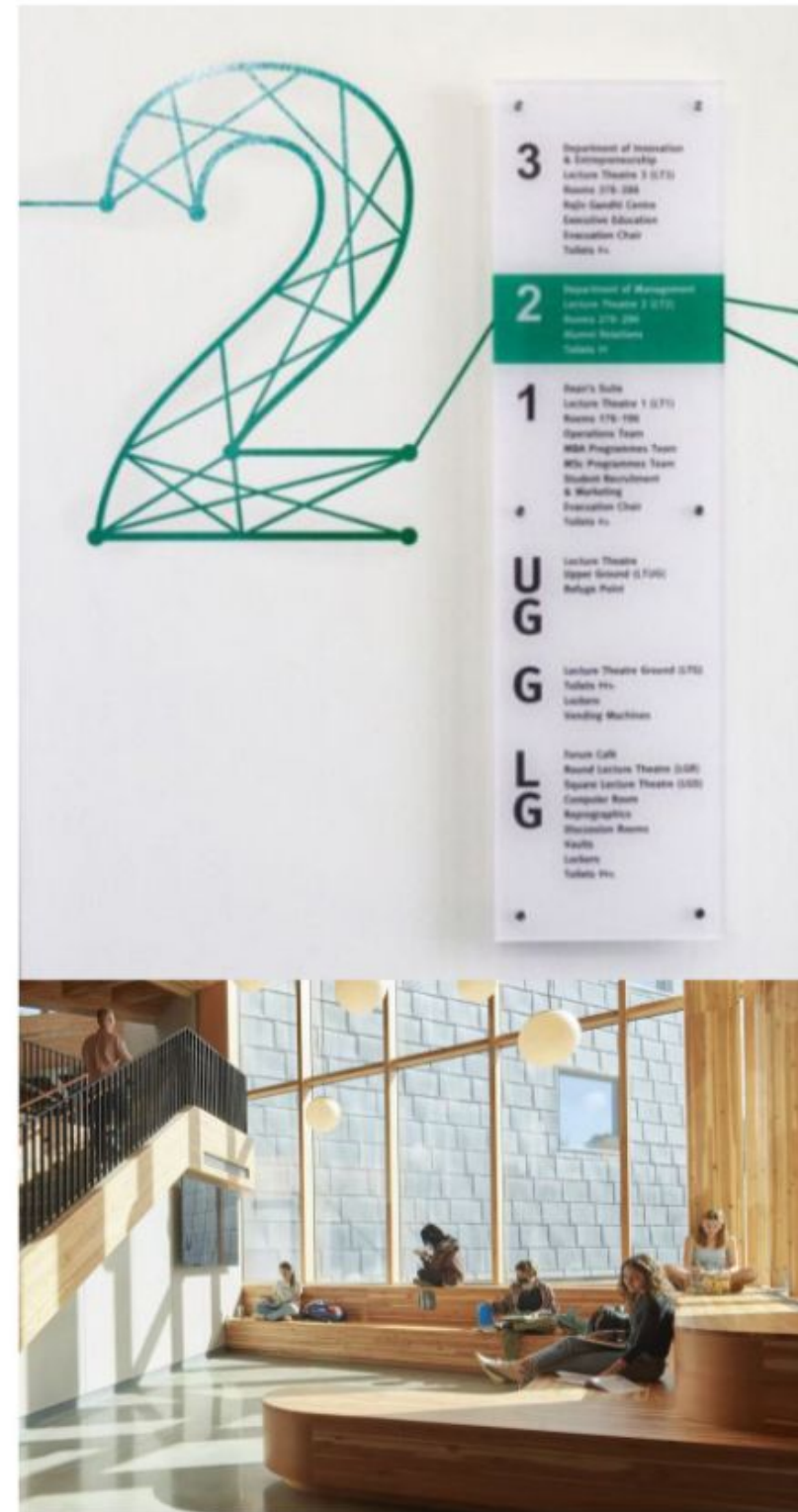


Tapestry: a woven fabric of
diverse threads and colors,
creating a rich and intricate whole

DESIGN CONCEPT OBJECTIVES



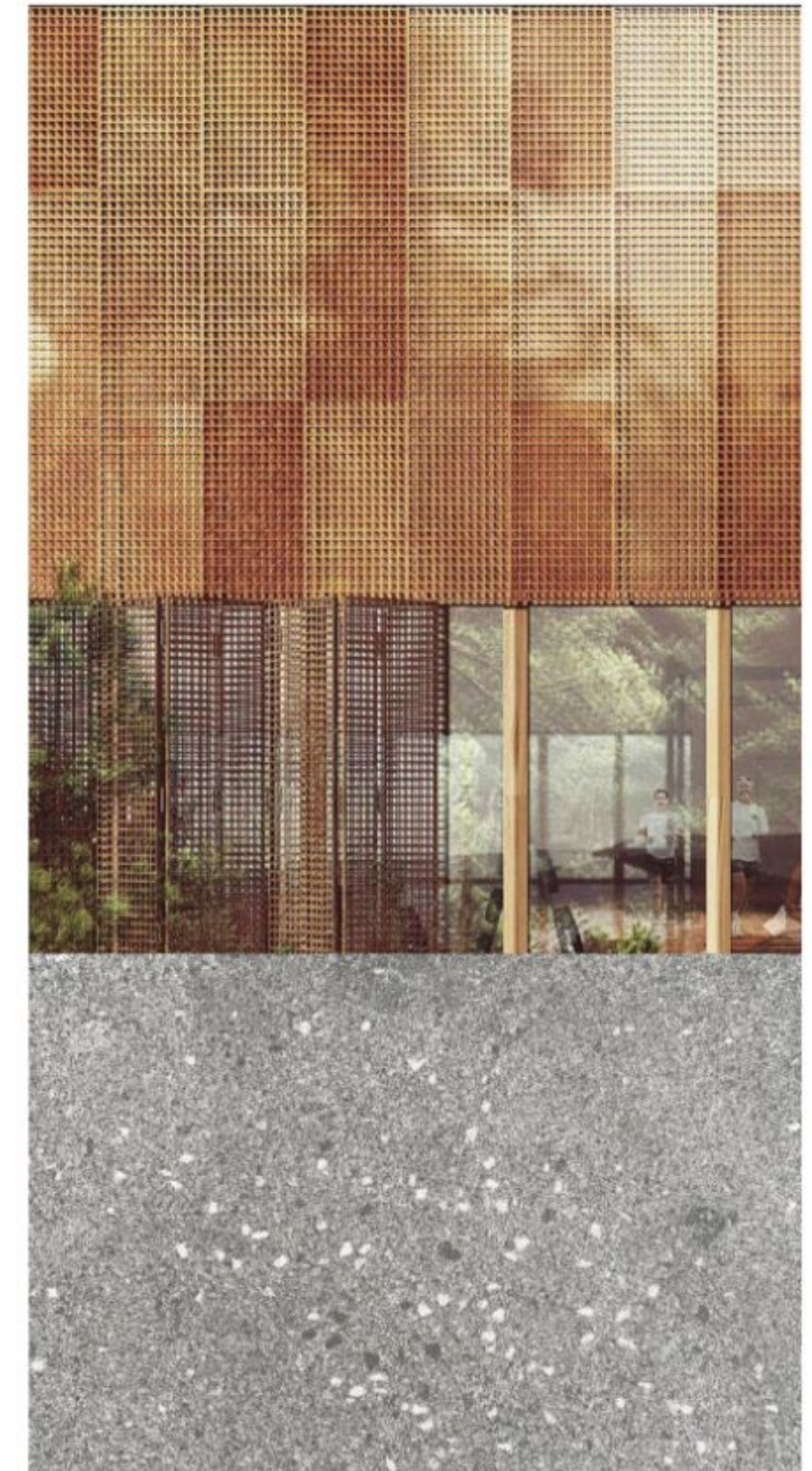
Weaving the story of Ida B. Wells through the campus and building



Weaving together different school programs, connected by a central heart

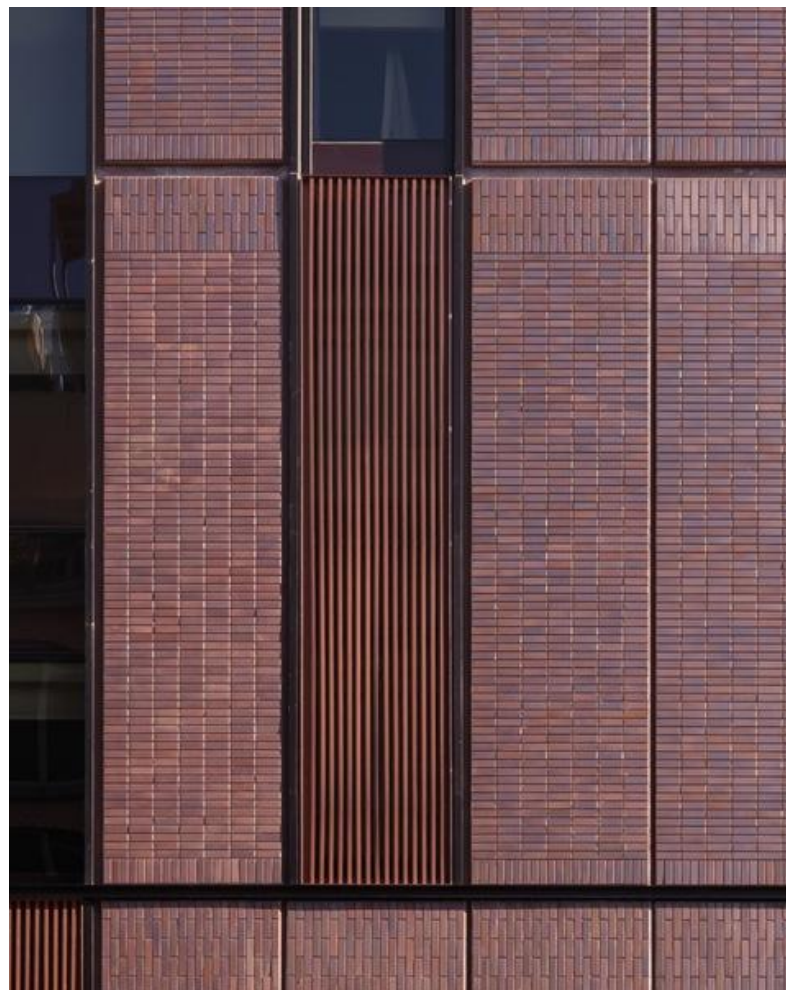


Weaving building materials, creating texture and depth both inside and out



Weaving the building and surrounding landscape together, inviting nature in and anchoring the school in the site

EXTERIOR CLADDING



Different materials,
woven together

Thin brick tile in
alternating pattern

Glass fiber reinforced
concrete fins mark column
and floor locations



Cladding inspiration

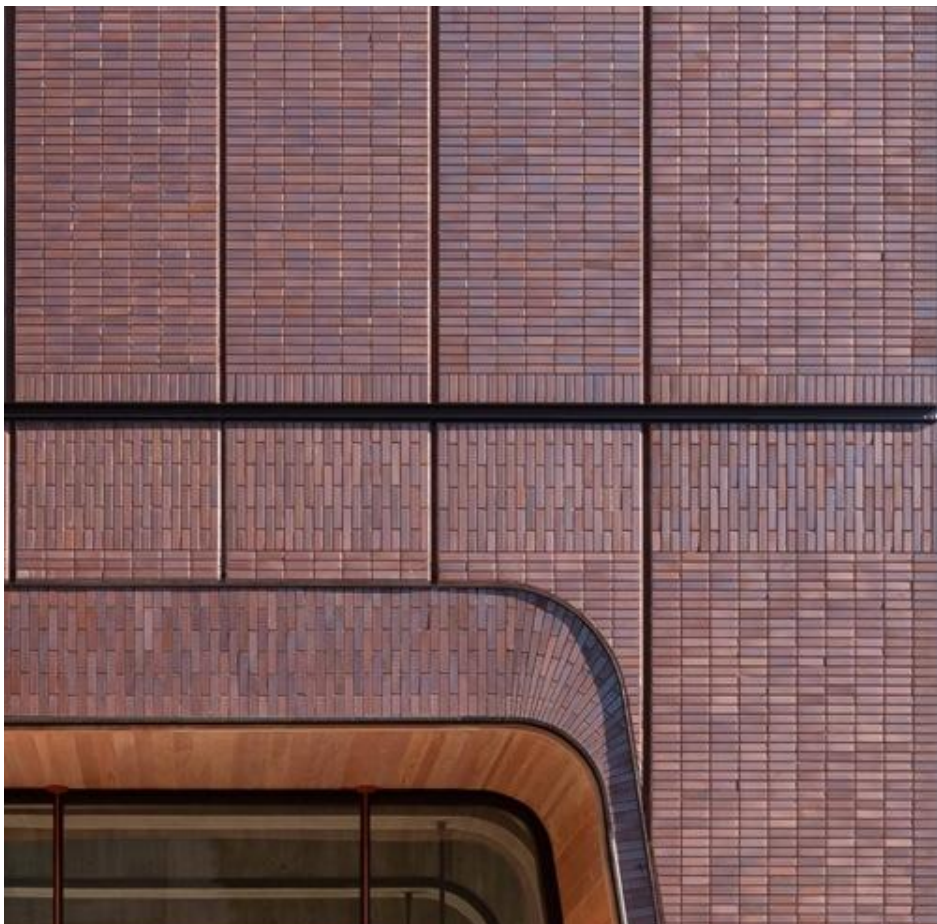
Typical cladding approach

THIN BRICK TILE

- Same material as regular brick, but thinner and less costly
- Applied like tile with mortar to a backer board
- Works well with the building's high-performance rainscreen exterior wall assembly
- Locally manufactured using post-industrial recycled content
- Lighter weight, works better with mass timber structure
- 84% less embodied energy than structural brick
- More design versatility!

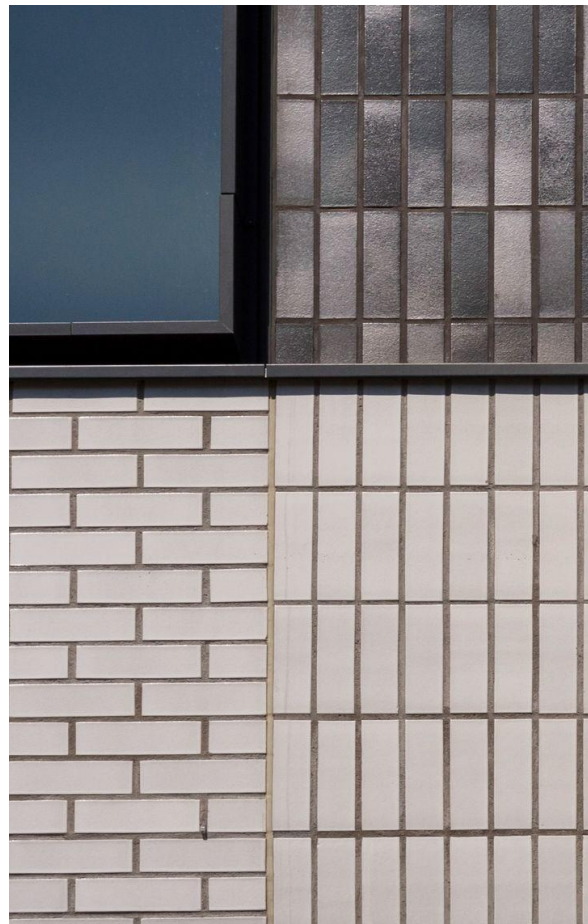
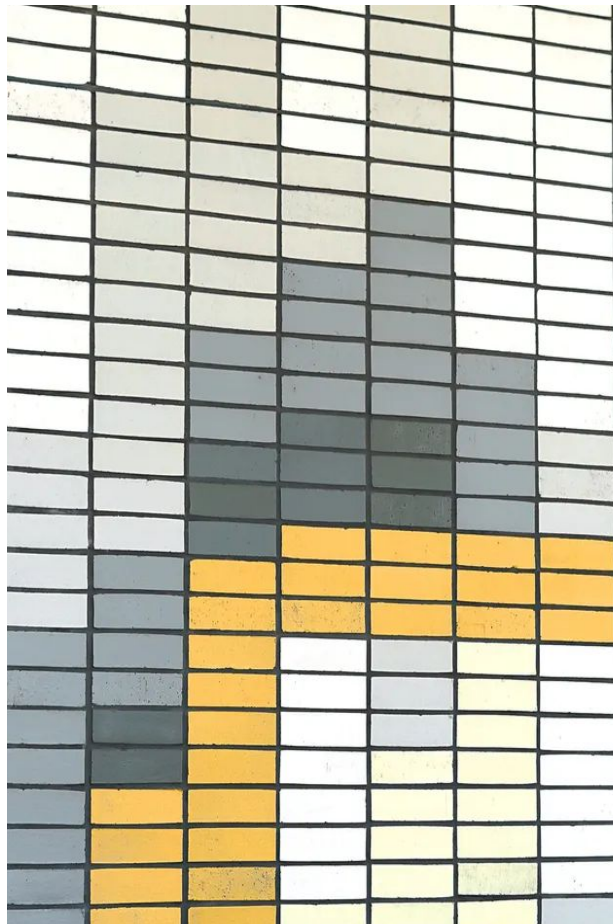


THIN BRICK TILE - NOT TRADITIONAL BRICK!

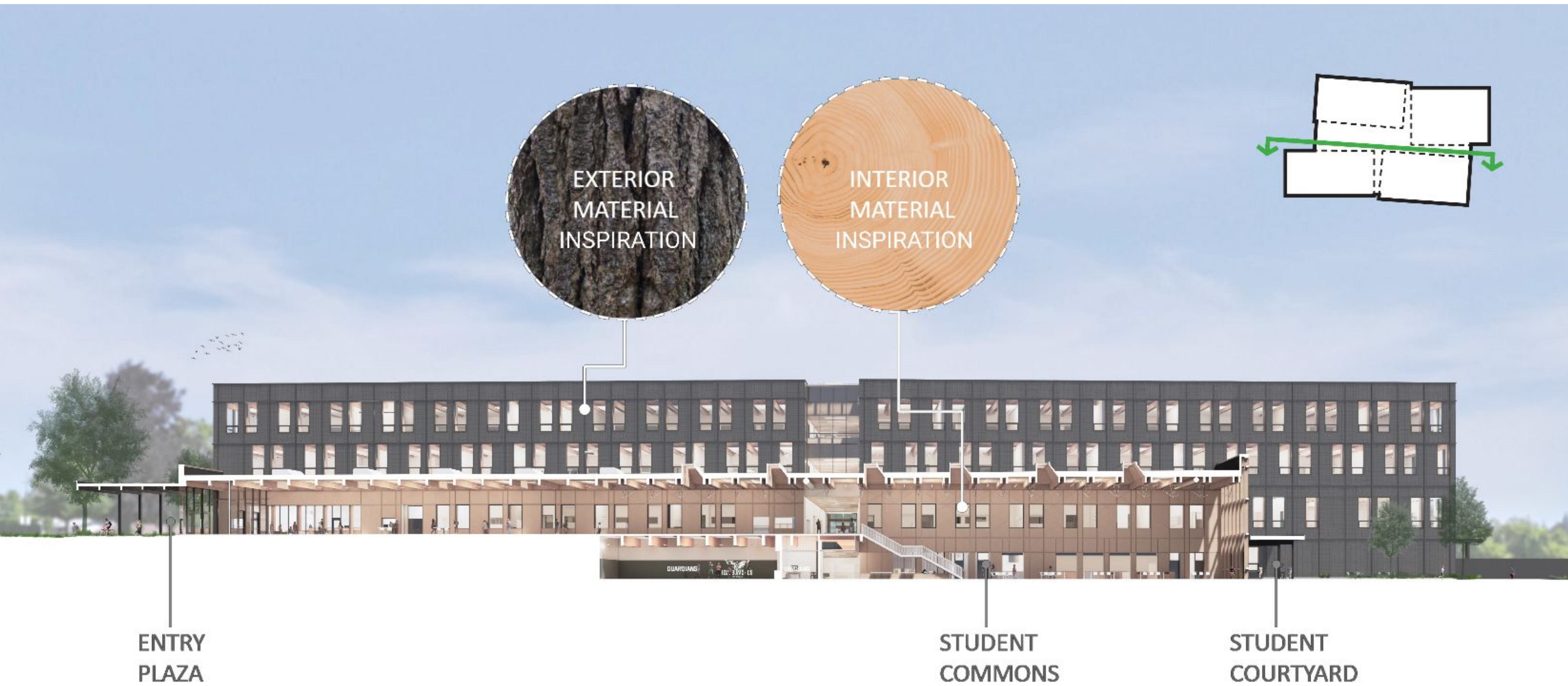


THIS!

NOT THAT!



NATURAL CONTEXT AS INSPIRATION



BRICK TILE: OPTION 1

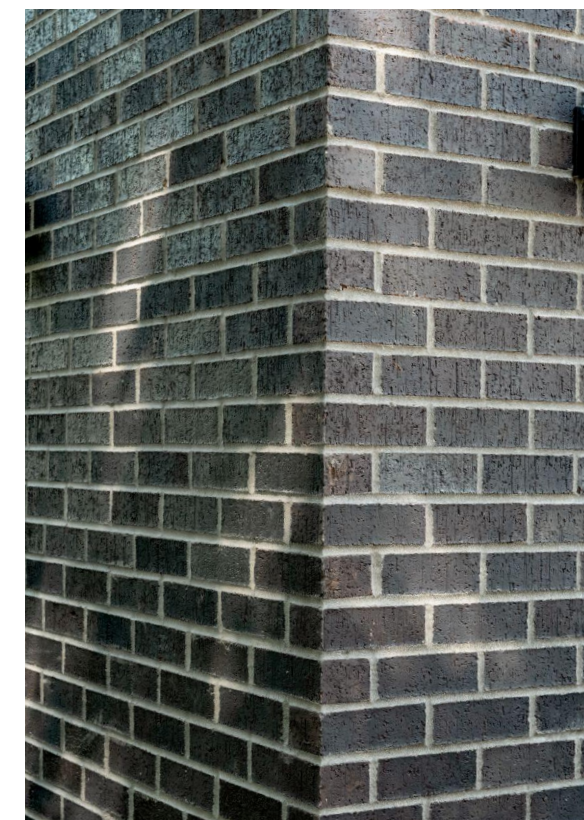


May 1, 9:30 am



May 1, 12:00 pm

- Rough, flat texture
- Less reflective
- Moderate color variation within each tile
- Moderate color variation from tile to tile



All brick tile options are locally sourced and are equally durable, sustainable, and maintainable.

BRICK TILE: OPTION 2



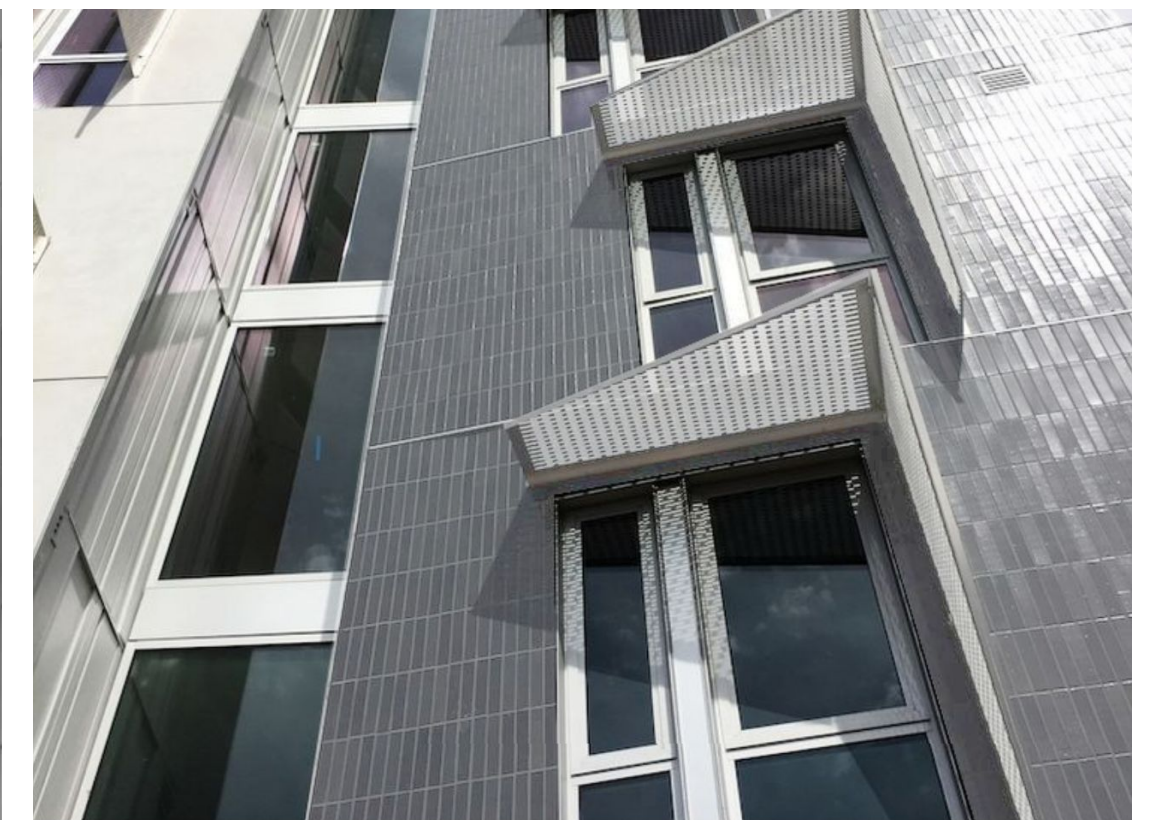
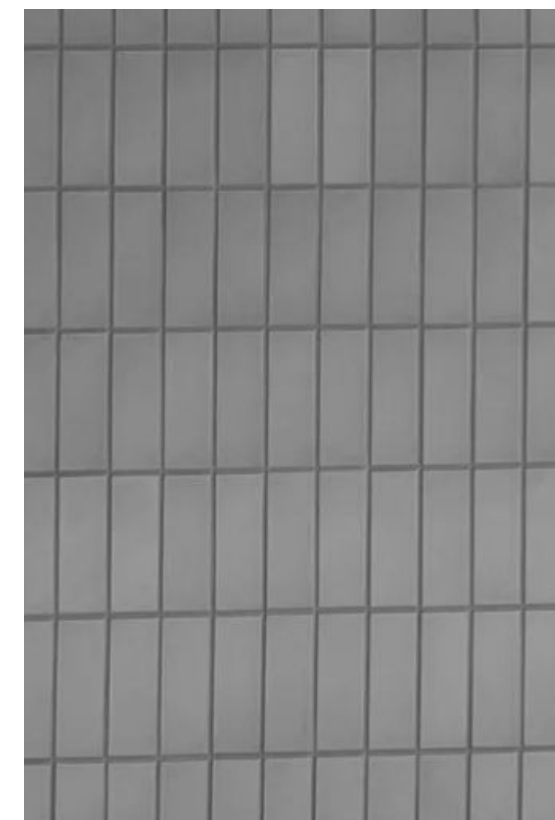
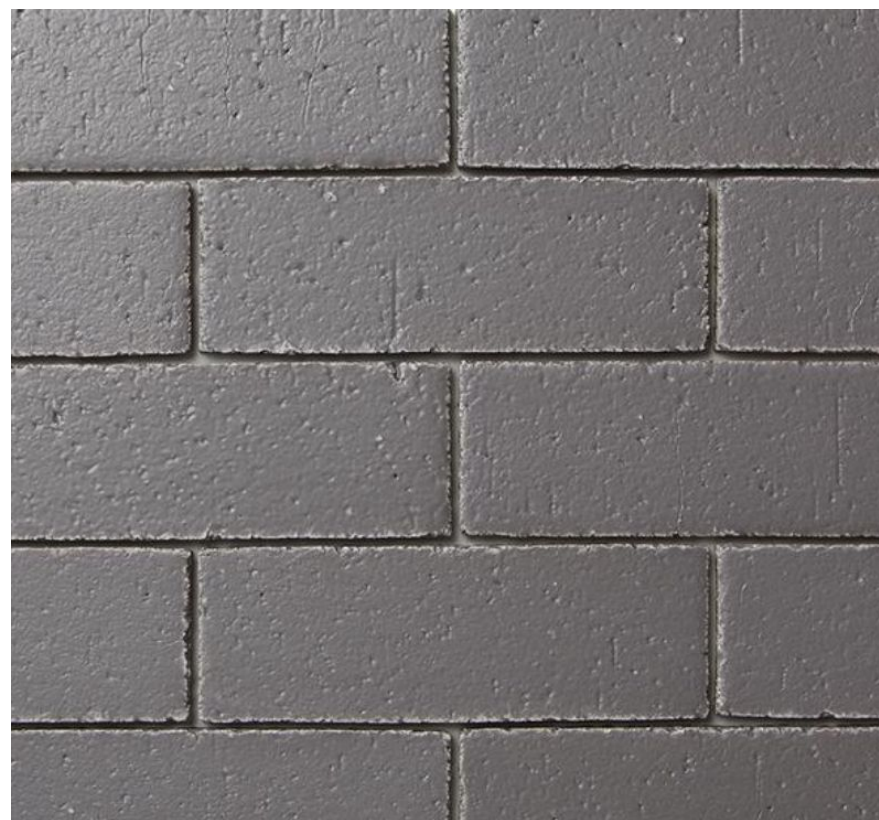
May 1, 9:30 am



May 1, 2:30 pm

- Smooth, flat texture
- More reflective
- Less color variation within each tile
- Moderate color variation from tile to tile

All brick tile options are locally sourced and are equally durable, sustainable, and maintainable.



BRICK TILE: OPTION 3



May 1, 9:30 am



May 1, 2:30 pm

- Smooth, flat texture
- More reflective
- Less color variation within each tile
- Moderate color variation from tile to tile

All brick tile options are locally sourced and are equally durable, sustainable, and maintainable.



BRICK TILE: OPTION 4



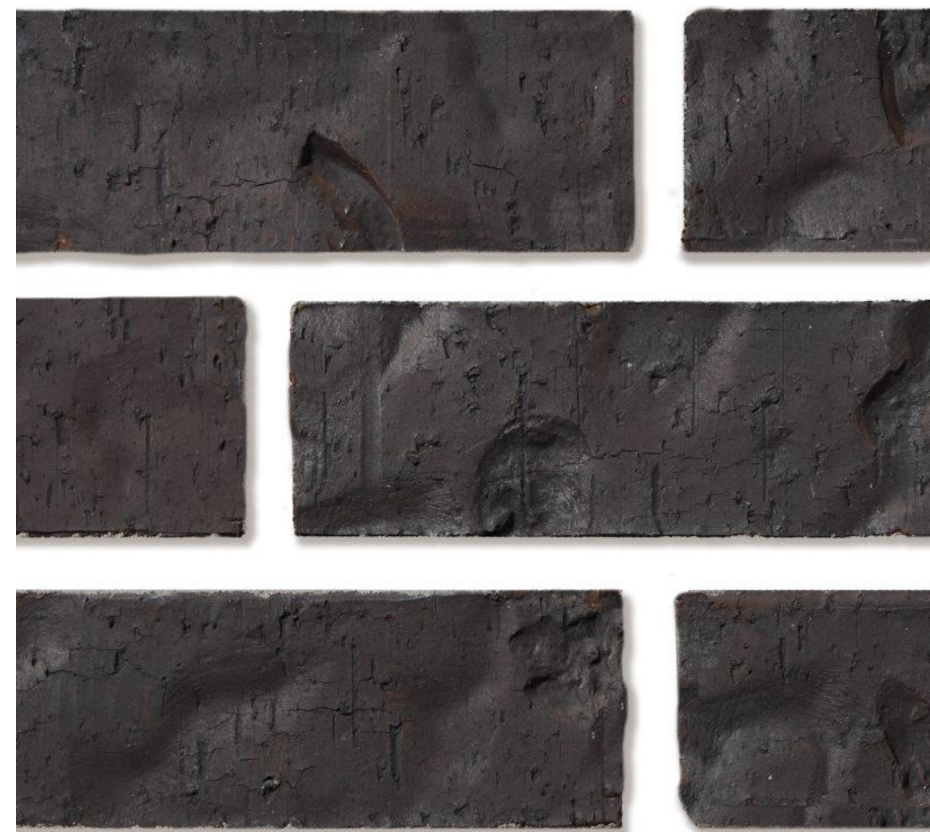
May 1, 9:30 am



May 1, 2:30 pm

- Faceted texture
- Less reflective
- Moderate color variation within each tile
- Moderate color variation from tile to tile

All brick tile options are locally sourced and are equally durable, sustainable, and maintainable.



Facade Feedback Activity



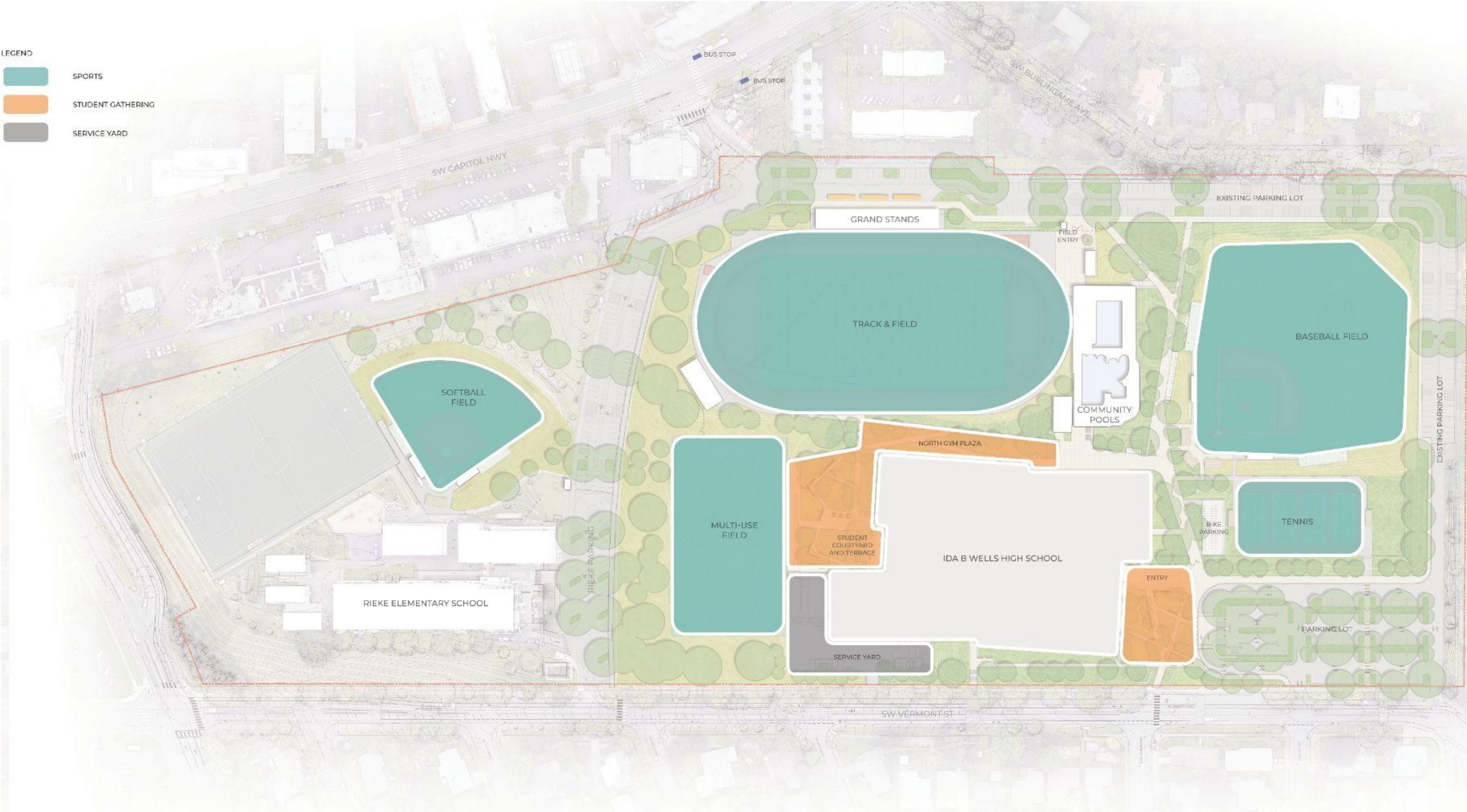
Site Design Updates



SITE PROGRAM

LEGEND

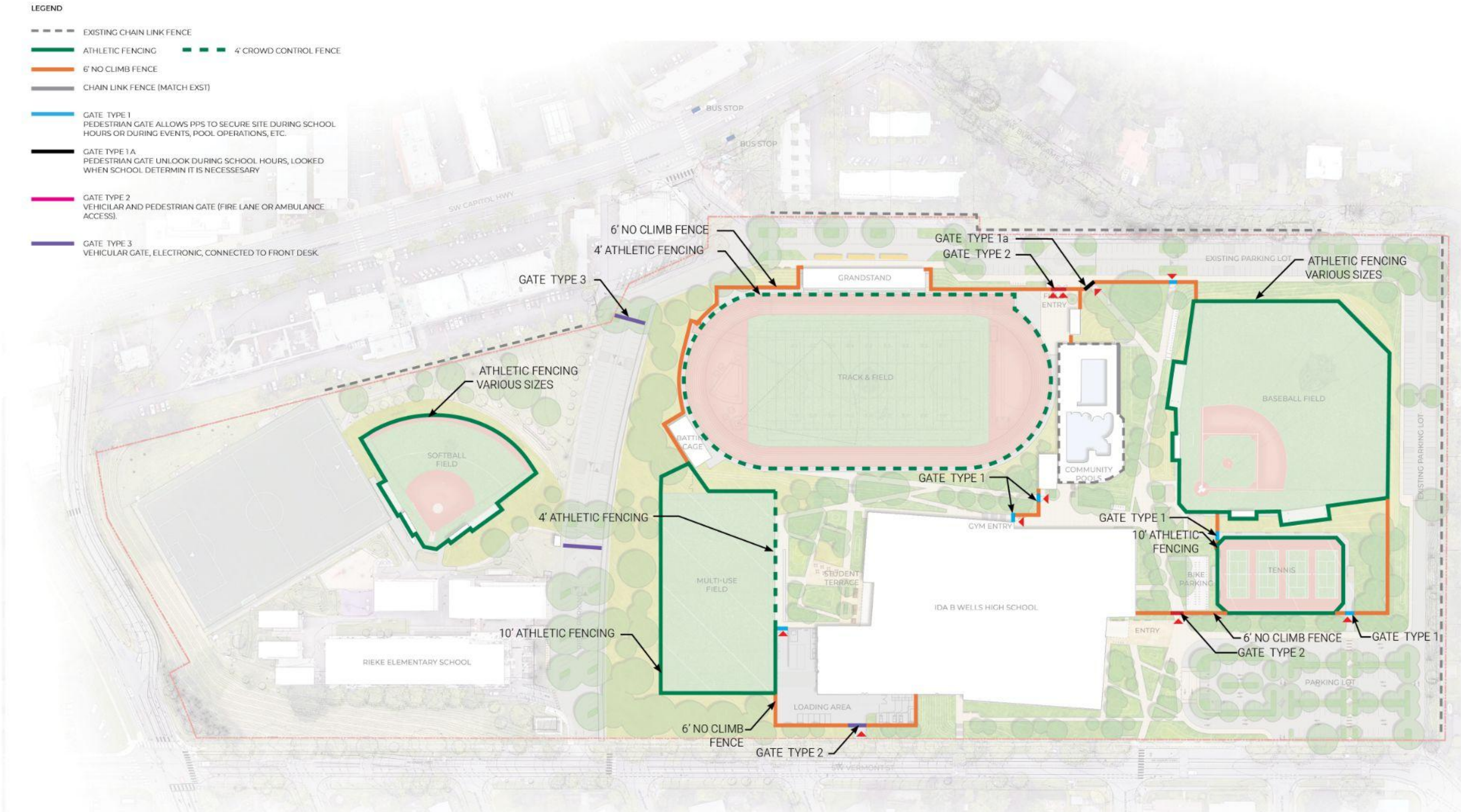
- SPORTS
- STUDENT GATHERING
- SERVICE YARD



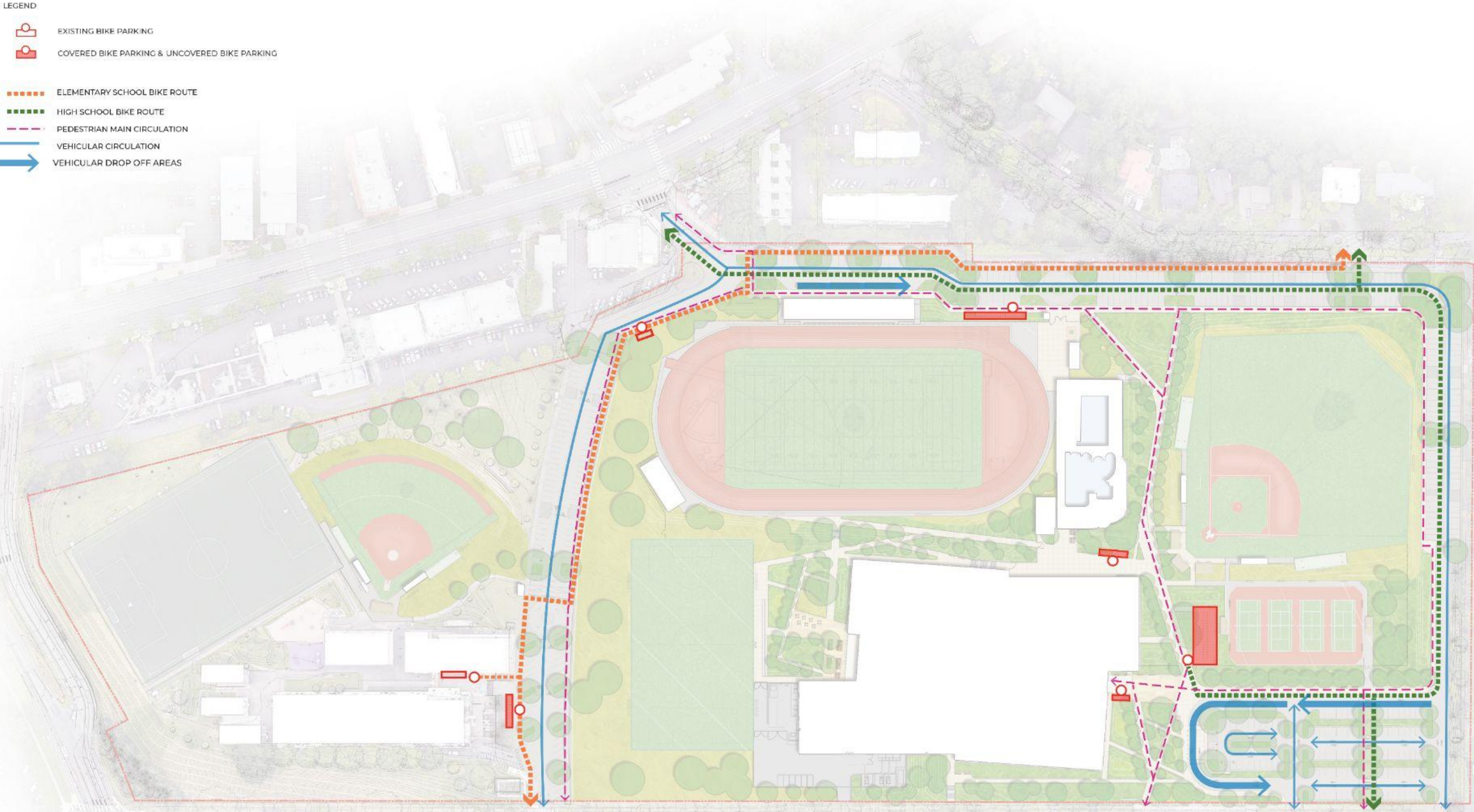
SITE DESIGN



FENCES AND GATES



SITE PEDESTRIAN CIRCULATION



NORTH ENTRY

VIEW 1 FROM SW CAPITOL HIGHWAY



MAIN ENTRY VIEW FROM DROP OFF

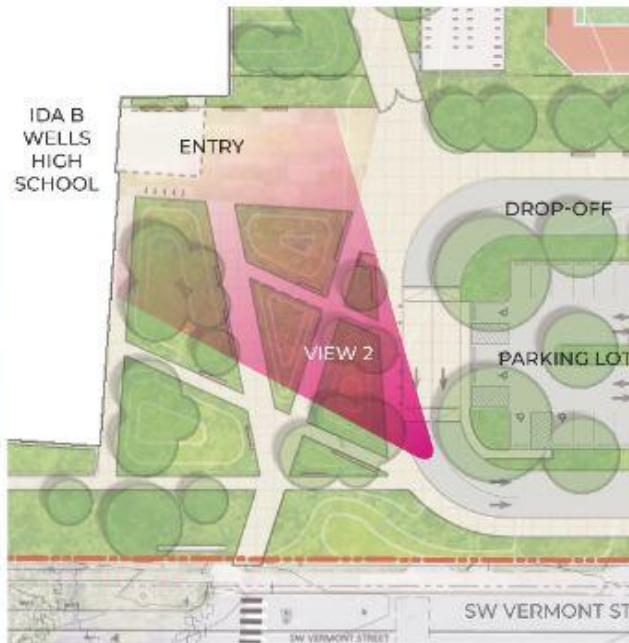
VIEW 2 TO MAIN ENTRY FROM PARKING LOT



The designed stormwater basin is seamlessly woven into the site's circulation and plaza, functioning as both an ecological feature and a central organizing element.

High branching trees with low understory plantings ensures the main entry remains visible and open.

Native and adaptive plant species provide seasonal color and interest to a distinctly Pacific Northwest landscape.

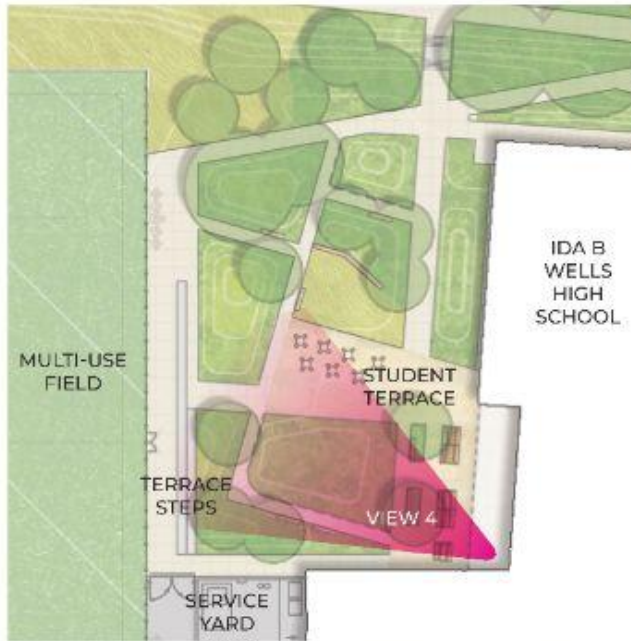


STUDENT COURTYARD

VIEW 4 TO STUDENT TERRACE

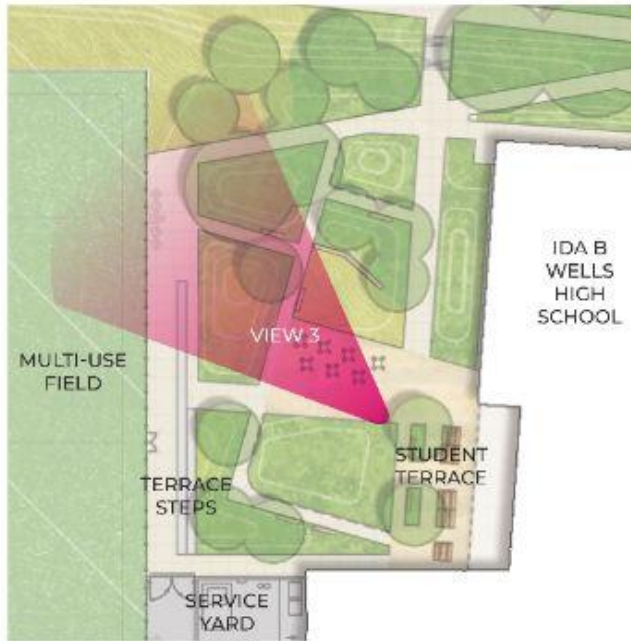


Tables and chairs, picnic tables and benches at the student terrace provide different options for students to engage with the outdoor environment.



STUDENT COURTYARD

VIEW 3 TO STUDENT TERRACE WALKWAYS



CONNECTION TO TRACK & FIELD



BREAKOUT GROUP DISCUSSION: CAMPUS ARRIVAL

How do you arrive at the building as a...

- visitor attending an event in the main gym? *
- visitor attending an event in the auxiliary gym? *
- visitor attending a theater performance? *
- visitor attending a softball game? *
- visitor attending a baseball game? *
- visitor attending a football game or track & field event? *
- visitor attending an event on the multipurpose field? *

**for all of the above, consider the experience of a person with mobility challenges.*

What is working about the arrival experience?

What is not working?

Feedback?
Questions?



UPCOMING MEETING DATES

Community Design Workshop: February 4, 2026

DAG 10: March TBD

Feedback?
Questions?



Thank you!

